



RIDGELINE

O P E N S P A C E



This 8-mile, native surface, single-track trail is of moderate difficulty and connects to a network of trails and open space throughout The Meadows and Red Hawk developments while providing a great hiking and mountain biking location.

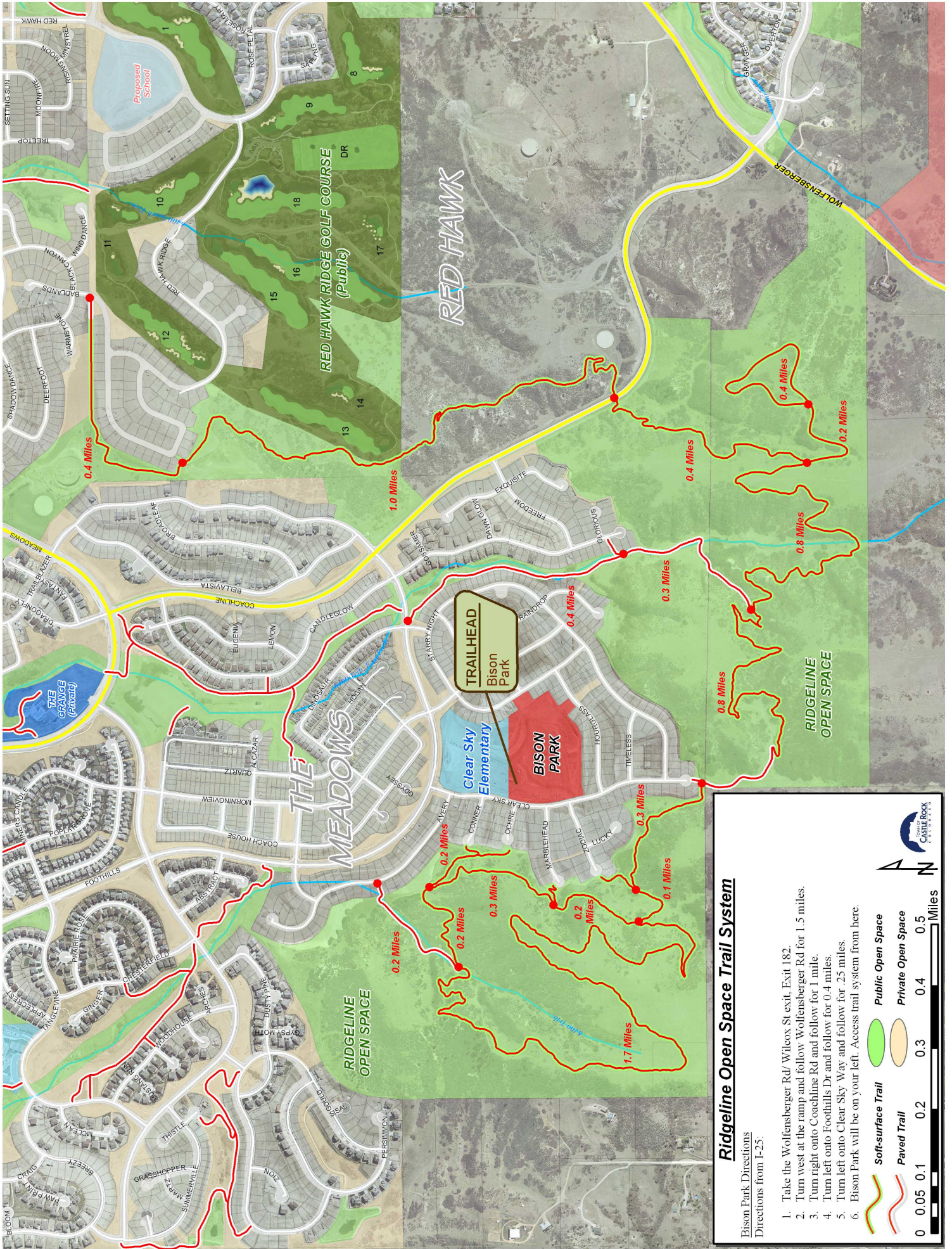
The soft-surface trails travel through valleys and ridgelines of the 370-acre open space property. Visitors can take in views of the Front Range to the west and the Town below as they traverse through open grassland and dense Gambel's Oak. Parking is available at Bison Park.

Ridgeline Open Space is available for adoption through the POST Partners volunteer program. Call the number to the left for details.

See the back for directions and a map.

www.CRgov.com/parks
303-814-7444





Ridgeline Open Space Trail System

Bison Park Directions
Directions from T-25:

1. Take the Wolfensberger Rd/ Wilcox St exit, Exit 182.
2. Turn west at the ramp and follow Wolfensberger Rd for 1.5 miles.
3. Turn right onto Coachline Rd and follow for 1 mile.
4. Turn right onto Foothills Dr and follow for 0.4 miles.
5. Turn left onto Clear Sky Way and follow for .25 miles.
6. Bison Park will be on your left. Access trail system from here.

